



Elevation 'A' with Slab Foundation



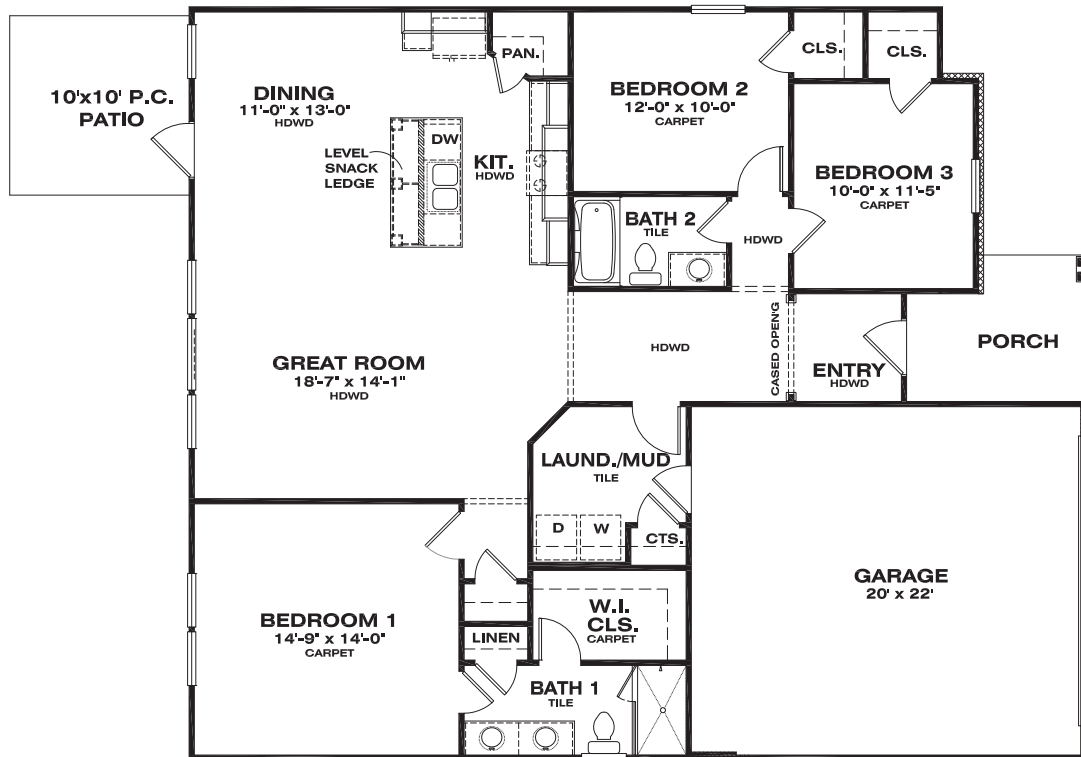
Elevation 'B' with Slab Foundation



Elevation 'A' with Basement Foundation



Elevation 'B' with Basement Foundation

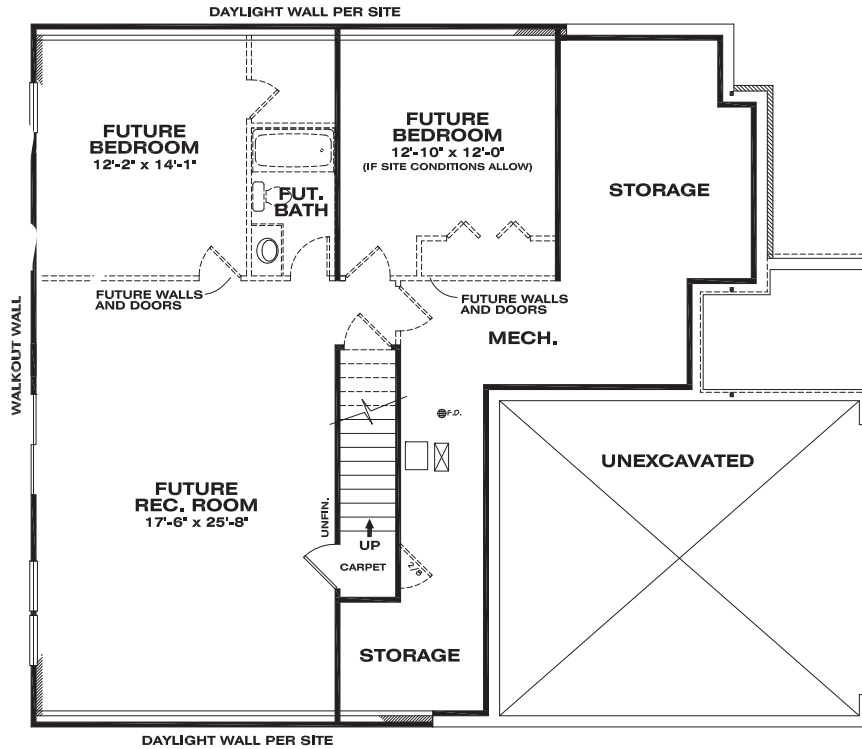


FIRST FLOOR
9' CEILING HT.

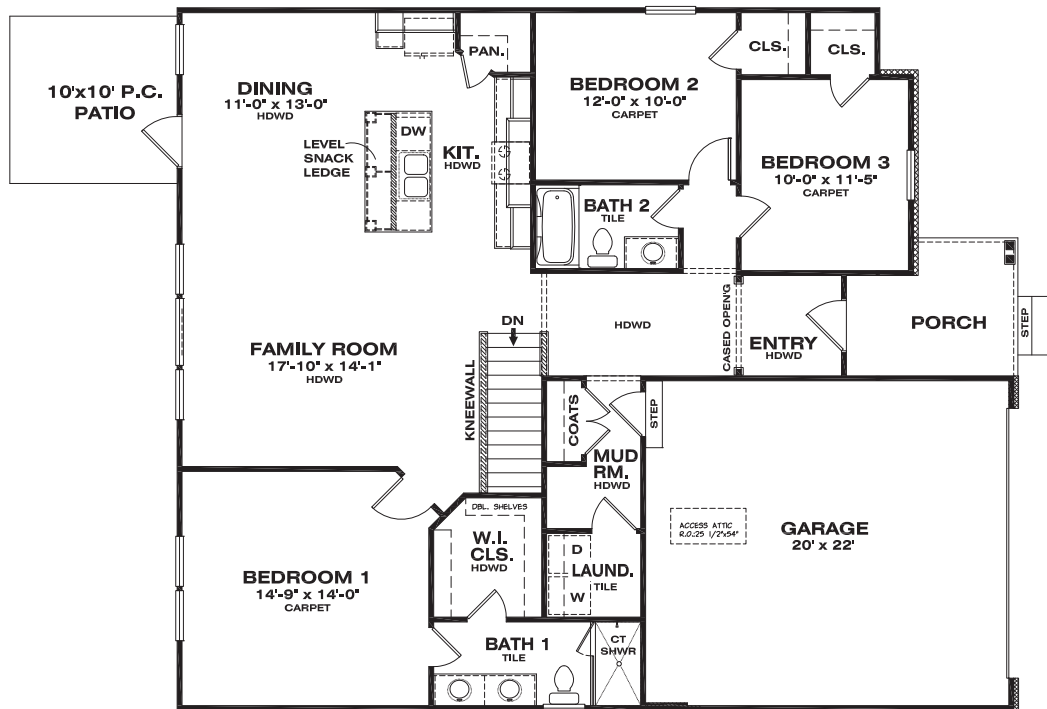
DIMENSIONS:
42'W x 50'D

1500 SF TOTAL
Slab Foundation

McKenzie (Basement) Auburn Alabama Series



UNFINISHED LOWER LEVEL



FIRST FLOOR
9' CEILING HT.

DIMENSIONS:
42'W x 50'D

1500 SF TOTAL
Basement Foundation